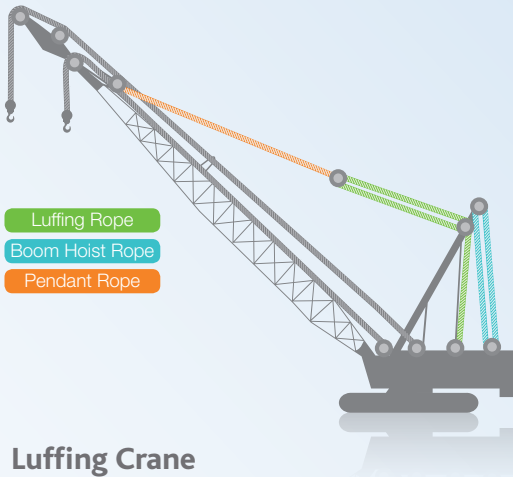


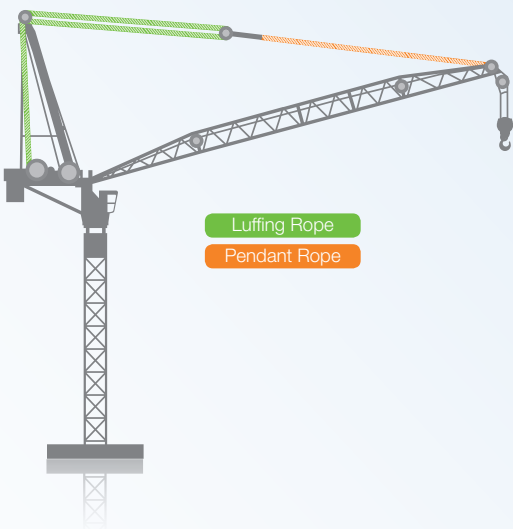
6xK36 and 6x36

All 6 strand ropes are to BS EN 12385-4:2002.

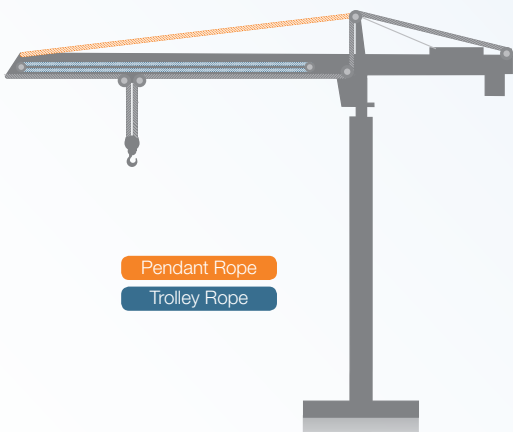
Crawler Crane



Luffing Crane



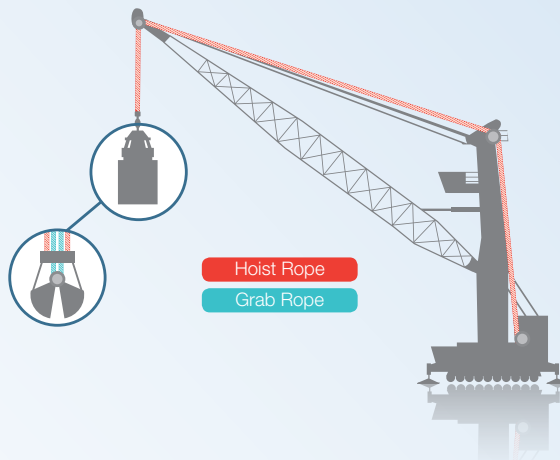
Tower Crane



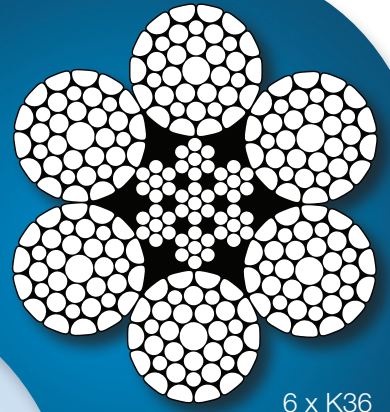
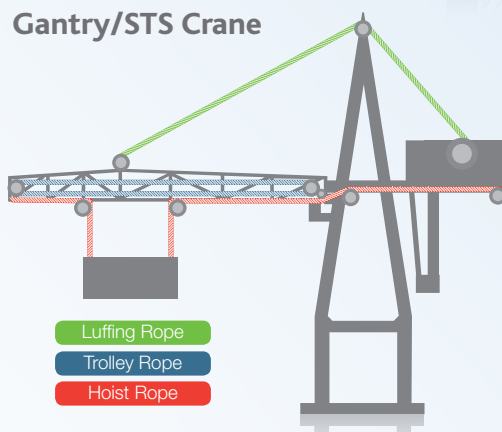
Foundation Equipment



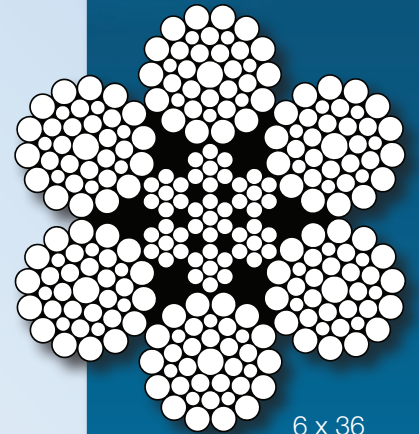
Harbor Mobile Crane



Gantry/STS Crane



6 x K36



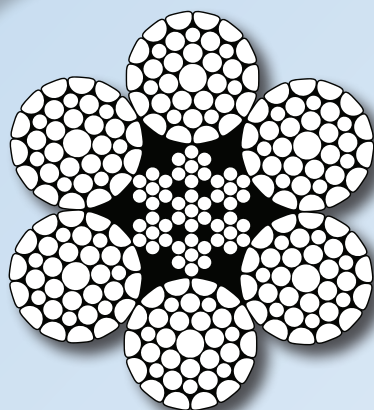
6 x 36

- ❁ 6 strand ropes can be made of either galvanized or ungalvanized wire
- ❁ 6 strand ropes should not be used with a swivel
- ❁ 6xk36 is suitable for multilayer spooling
- ❁ 6xk36 has a good resistance against drum crushing
- ❁ 6x36 is a very flexible rope with consistent bend fatigue performance



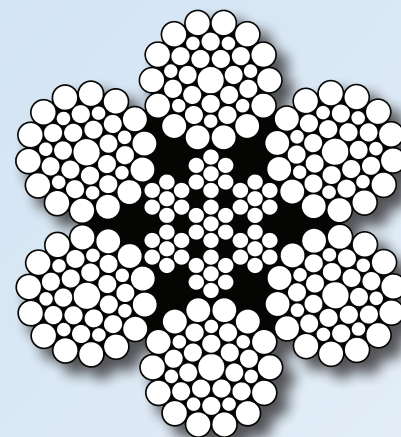
The rope is lubricated - The finish available as standard is galvanized - Bright finish on request - ordinary or lang's lay available - Rope category number (RCN) to determine the number of visible broken outer wire, signaling discard of rope acc. ISO 4309: RCN = 09

6xK36 and 6x36



6 x K36

Nominal rope diameter	Approx mass	Minimum breaking Load at	
		1960	
mm*	kg/m	kN	t
10	0.430	85.5	8.72
12	0.660	118.7	12.10
13	0.790	147.0	14.99
14	0.930	169.0	17.20
16	1.190	217.0	22.10
18	1.490	276.0	28.00
19	1.660	303.0	30.80
20	1.840	333.0	33.90
22	2.210	399.0	40.60
24	2.650	487.0	49.60
26	3.140	576.0	58.74
28	3.610	659.0	66.80
30	4.210	758.0	77.29
32	4.710	847.0	86.30
34	5.290	950.0	96.80
35	5.610	1010.0	102.99
36	5.910	1068.0	108.90
38	6.460	1187.0	121.00
40	7.120	1293.0	181.85



6 x 36

Nominal rope diameter	Approx mass	Minimum breaking Load at	
		1960	
mm*	kg/m	kN	t
8	0.262	44.70	4.56
9	0.331	56.50	5.76
10	0.409	69.80	7.12
11	0.495	84.40	8.61
12	0.589	100.00	10.20
13	0.691	118.00	12.03
14	0.802	137.00	13.97
16	1.050	179.00	18.25
18	1.330	226.00	23.05
20	1.640	279.00	28.45
22	1.980	338.00	34.47
24	2.360	402.00	40.99
26	2.760	472.00	48.13
28	3.210	547.00	55.78
32	4.190	715.00	72.91
36	5.300	904.00	92.18
40	6.540	1120.0	114.21
44	7.920	1350.0	137.66
48	9.420	1610.0	164.17
52	11.10	1890.0	192.73
56	12.80	2190.0	223.32
60	14.70	2510.0	255.95

* Standard tolerance: +2% to +4%, other tolerances possible upon agreement. Other and special rope diameters are available upon request.
1) The value are indicative only. Authoritative figures remain the metric ones!